

MAKING IT HOME YOUTH CONFERENCE 2009



Deb Tsorbaris –Director, Housing Sector Development

28 October 2009, MCG Melbourne

Overview

- ❑ *Creating Connections*; what we have learnt and what we can build on.
- ❑ *Homelessness 2020*; discussion paper.

Creating Connections: A Solid Service Platform

- ❑ Since 2006, *Creating Connections* has provided additional resources of over \$28 million to support and improve housing stability and the social inclusion of young people.
- ❑ Since January 2007 over 3,500 young people have accessed *Creating Connections* programs.
- ❑ Early evaluation findings indicate that *Creating Connections* has been successful in supporting young people in a number of areas of their life.

Creating Connections: Future Considerations

- ❑ What does a good outcome for a young person look like?
- ❑ How do we link service interventions to these desired outcomes?
- ❑ How do we support the development of effective and mature partnerships?
- ❑ How do we build on good partnerships to further improve capacity and coordination?

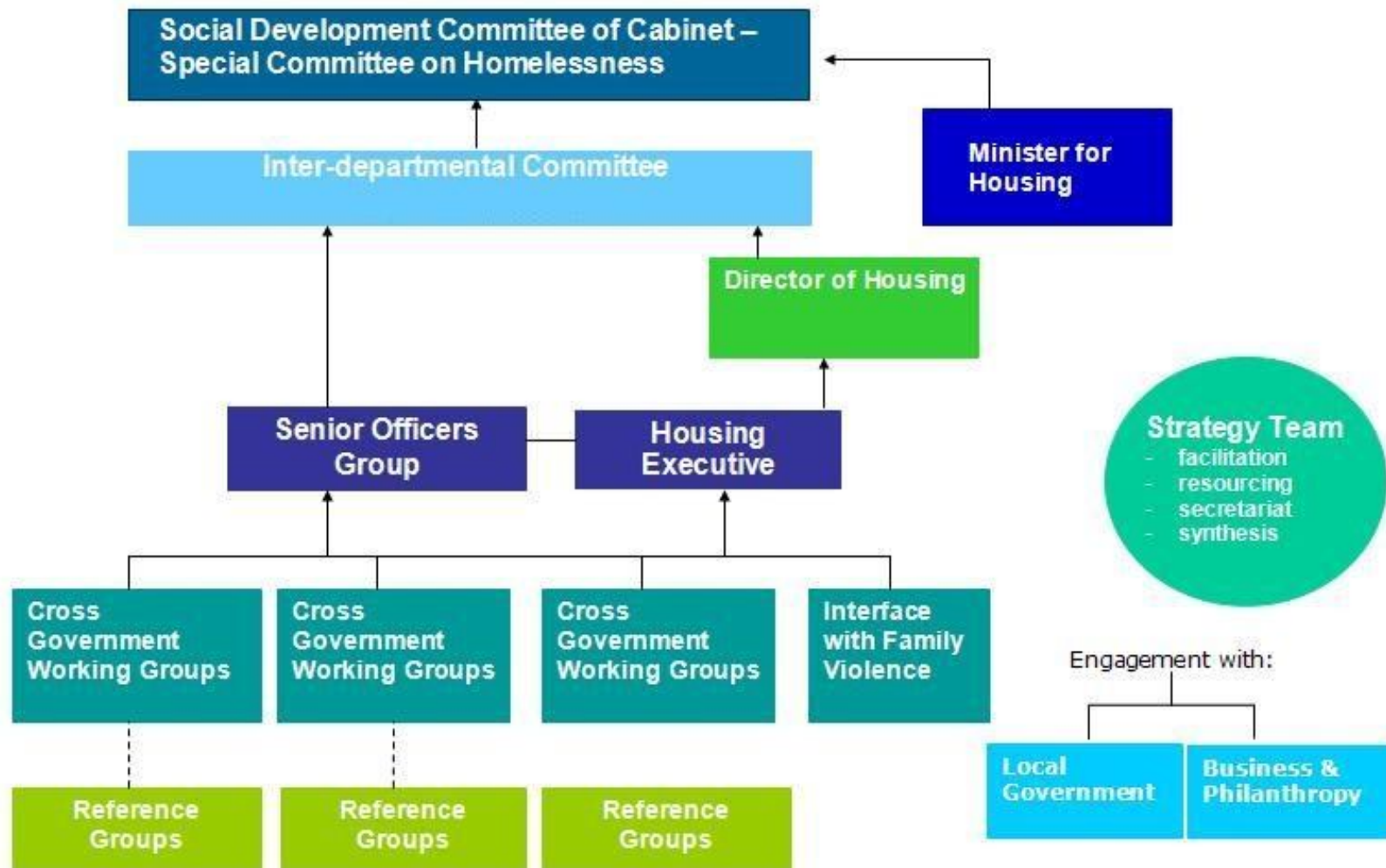
Creating Connections: Future Considerations

- ❑ How do we continue to develop youth practice and build capacity of the sector?
- ❑ How can we create access points into the youth homelessness service system that are linked to Local Area Service Networks?
- ❑ How do we increase young people's engagement in community and education, employment and training?
- ❑ What other models of housing and support will improve outcomes for young people?

Homelessness 2020: Themes

- ❑ The importance of social inclusion.
- ❑ Improving prevention and early intervention.
- ❑ Integrating whole of Government approaches.
- ❑ Focusing policy and service delivery on the individual.

Whole of Government Approach to Homelessness 2020



Homelessness 2020: Discussion Paper

- ❑ Released in October 2009.
- ❑ Identify policies which assist Victoria to reduce the incidence and impact of homelessness over the next ten years.
- ❑ Continue discussion and incorporate key stakeholder input.